

Collin County Outer Loop Segment 5

**COLLIN COUNTY
OUTER LOOP
SEGMENT 5**



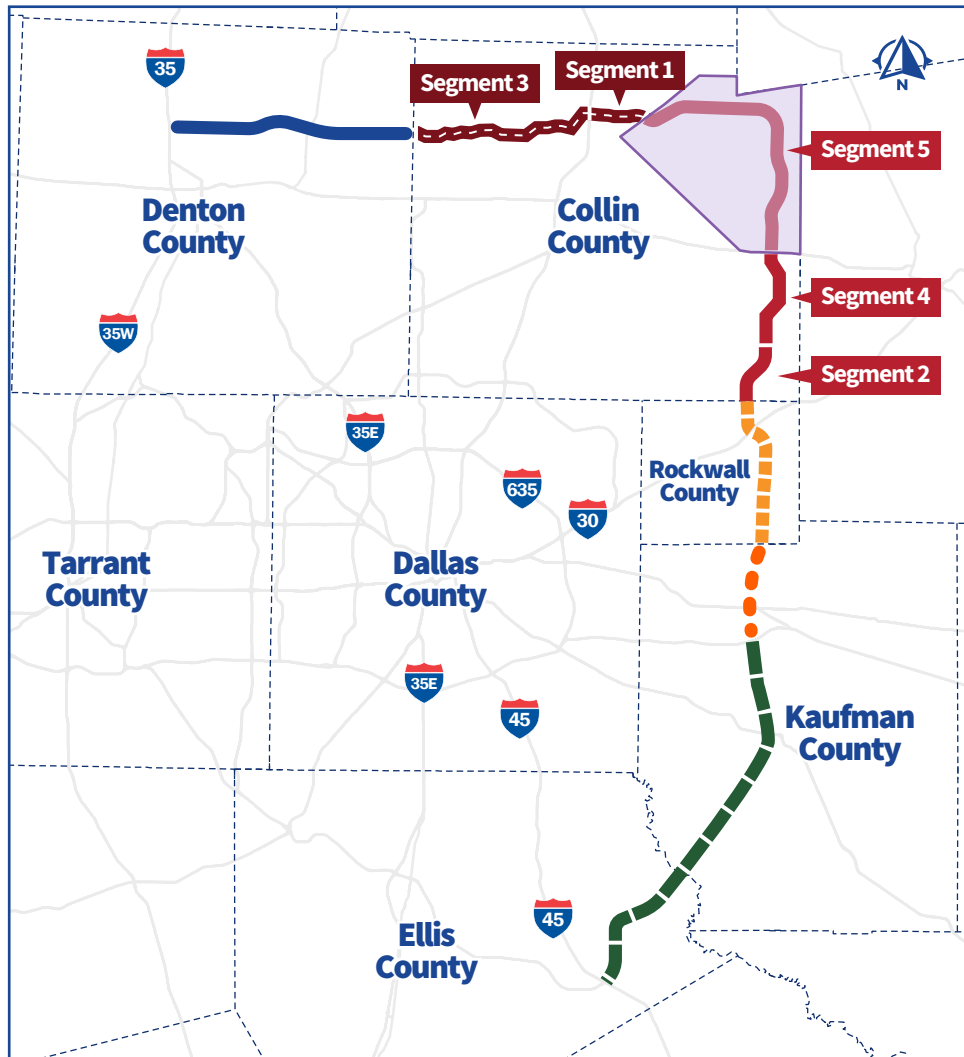
Study Limits: from SH 121 to US 380

Collin County is the sixth-highest populated county in Texas and a vital part of the rapidly growing Dallas-Fort Worth Metroplex. With a forecasted population growth of 70% from 2026 to 2050, planning for local and regional connectivity is imperative to development.

Collin County is studying Segment 5 of the Collin County Outer Loop, a corridor of approximately 21 miles, from SH 121 to US 380. This study is to identify right-of-way (ROW) needs and revisit the study completed on this segment in 2007. The Collin County Outer Loop is anticipated to utilize a 500-foot ROW with five mainlanes in each direction and two-lane frontage roads in each direction.

The 55-mile Collin County Outer Loop makes up a portion of the currently developing Regional Outer Loop, made up of projects being conducted in Collin, Denton, Kaufman and Rockwall counties. The proposed project will be constructed in phases. Construction staging will depend on availability of funding and traffic demand along the corridor.

- Study Area - Segment 5
- Existing Collin County Regional Outer Loop
- Proposed Collin County Regional Outer Loop
- Proposed for Evaluation
- Proposed Extension for Future Evaluation



Study Objectives



Enhanced Mobility and Safety



Engineering Feasibility



Minimizing Environmental Impacts

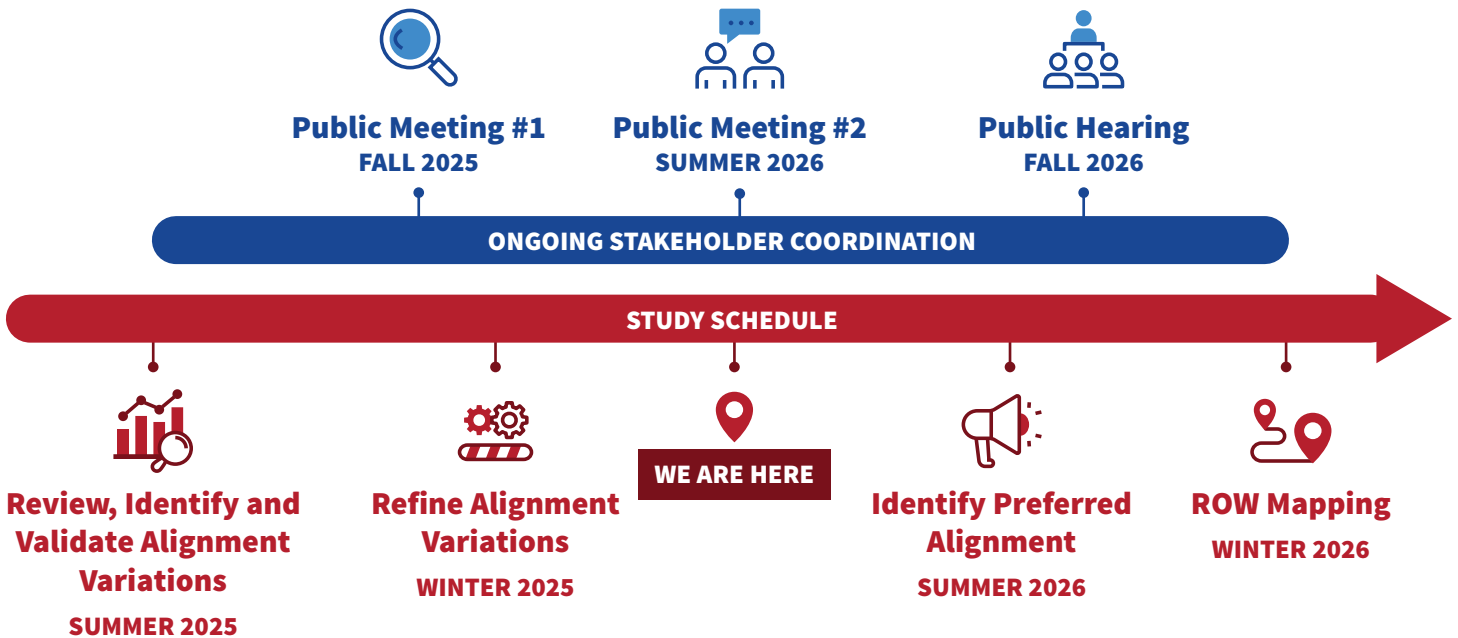


Cost Effectiveness

Study Process



Study Schedule



Contact Information